

OAKLAND, CALIFORNIA

154
AL-294 (FAA)

LOC I-INB	APP CRS	Rwy Idg	10000
108.7	294°	TDZE	6
		Apt Elev	6

ILS RWY 29 (CAT III)

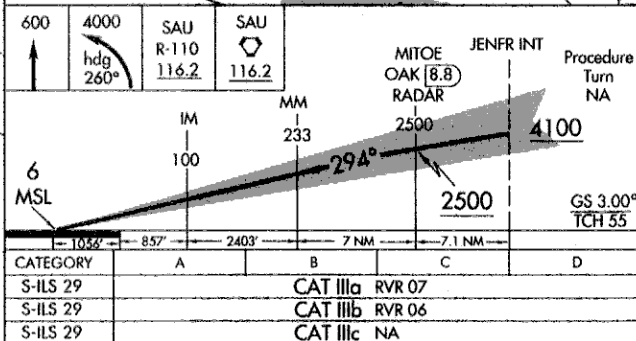
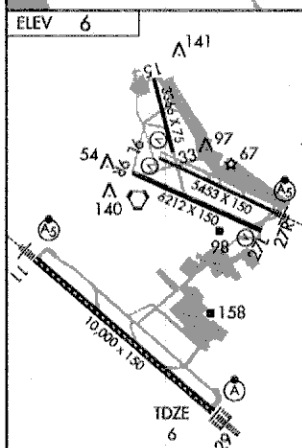
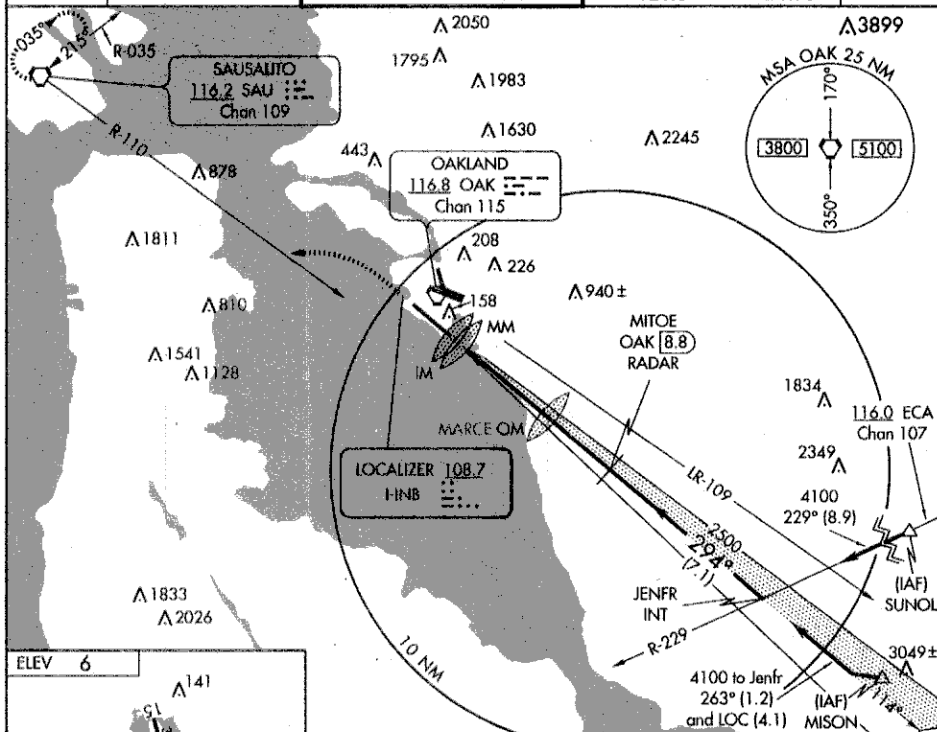
OAKLAND/ METROPOLITAN OAKLAND INTL (OAK)

Obstructions in the missed approach area require a rate of climb of at least 300 FPM/100K, 450 FPM/150K, 600 FPM/200K to 600 feet, no wind conditions.

ALSF-2
A

MISSED APPROACH: Climb to 600 then climbing left turn to 4000 via heading 260° and SAU R-110 to SAU VORTAC and hold.

ATIS	SIERRA APP CON	OAKLAND TOWER (Rwys 9-27, 15-33)	GND CON (Rwys 9-27, 15-33)	CINC DEL
133.775	135.4 310.8 354.1	(Rwy 11-29) 118.3 291.65 127.2 256.9	(Rwy 11-29) 121.9 121.75	121.1



CATEGORY	A	B	C	D
S-ILS 29			CAT IIIa RVR 07	
S-ILS 29			CAT IIIb RVR 06	
S-ILS 29			CAT IIIc NA	

**CATEGORY III ILS - SPECIAL AIRCREW
& AIRCRAFT CERTIFICATION REQUIRED**

OAKLAND, CALIFORNIA

Amcd 24 02332

OAKLAND/ METROPOLITAN OAKLAND INTL (OAK)

37°43'N-122°13'W

ILS RWY 29 (CAT III)

SW-2, 28 NOV 2002

SW-2, 28 NOV 2002