

LOC HXB 111.7	APP CRS 100°	Rwy ldg 10502 TDZE 1204 Apt Elev 1204
-------------------------	------------------------	---

ILS RWY 10L

PITTSBURGH INTL (PIT)

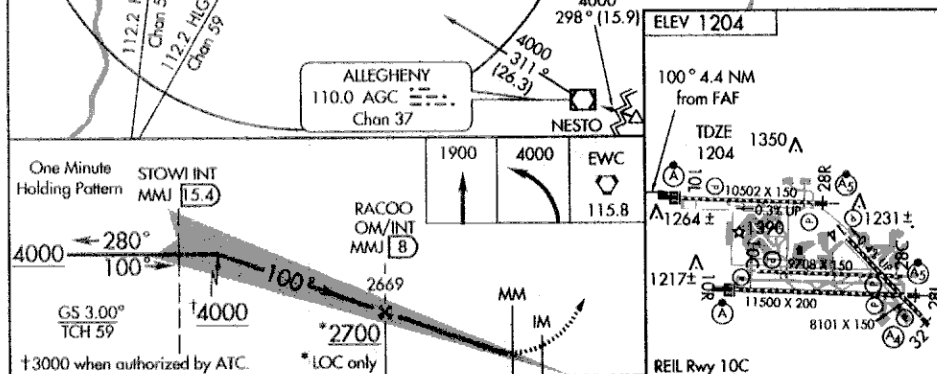
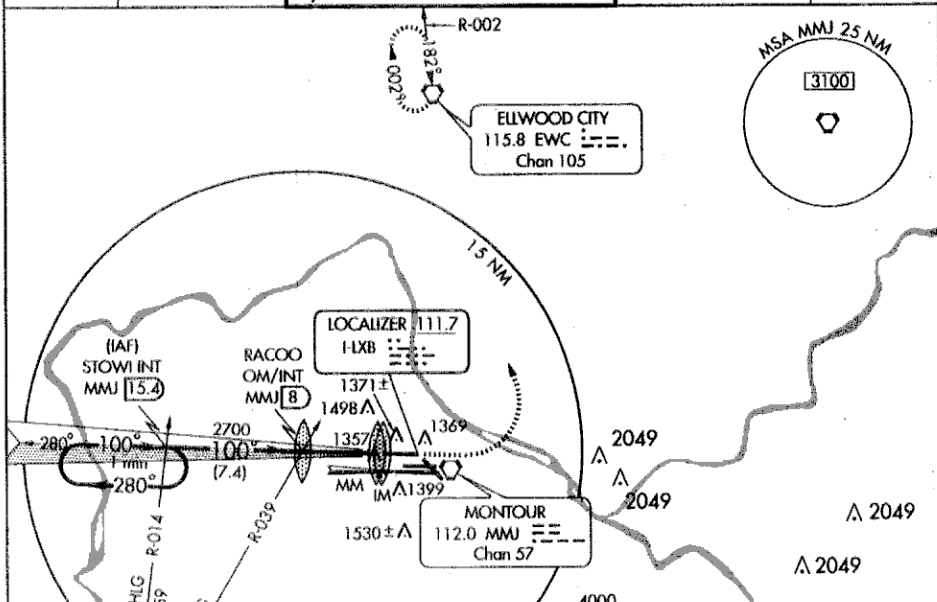
Simultaneous approach authorized with Rwy 10R.
For inoperative ALSF, increase S-LOC 10L Cat E
visibility to RVR 6000.

ALSF-2



MISSED APPROACH: Climb to 1900, then climbing left turn
to 4000 direct EWC VORTAC and hold. (TACAN equipped
aircraft continue to EWC R-002/5 DME and hold North, RT,
182° inbound.)

ATIS ARR 127.25 DEP 135.9	PITTSBURGH APP CON 123.95 360.8	PITTSBURGH TOWER Rwys 10L-28R 128.3 291.7 Rwys 10C-28C, 14-32 135.025 270.325 Rwy 10R-28L 119.1 270.325	GND CON SOUTH 121.9 348.6 NORTH 127.8 348.6	CLNC DEL 126.75 353.7
---	---	---	---	---------------------------------



CATEGORY	A	B	C	D	E
S-ILS 10L	1404/18 200 (200-½)				1404/24 200 (200-½)
S-LOC 10L	1580/24 376 (400-½)				1580/40 376 (400-¾)
CIRCLING	1700-1 496 (500-1)				1760-2 1860-2¼ 556 (600-2) 656 (700-2¼)

PITTSBURGH, PENNSYLVANIA
Amdt 24 02164

40°29'N-80°14'W

PITTSBURGH INTL (PIT)
ILS RWY 10L